



THE PLANNING SPACE

PROJECT MANAGEMENT CONSULTANT



INTRODUCTION

We are pleased to present this proposal for professional project planning consultancy services.

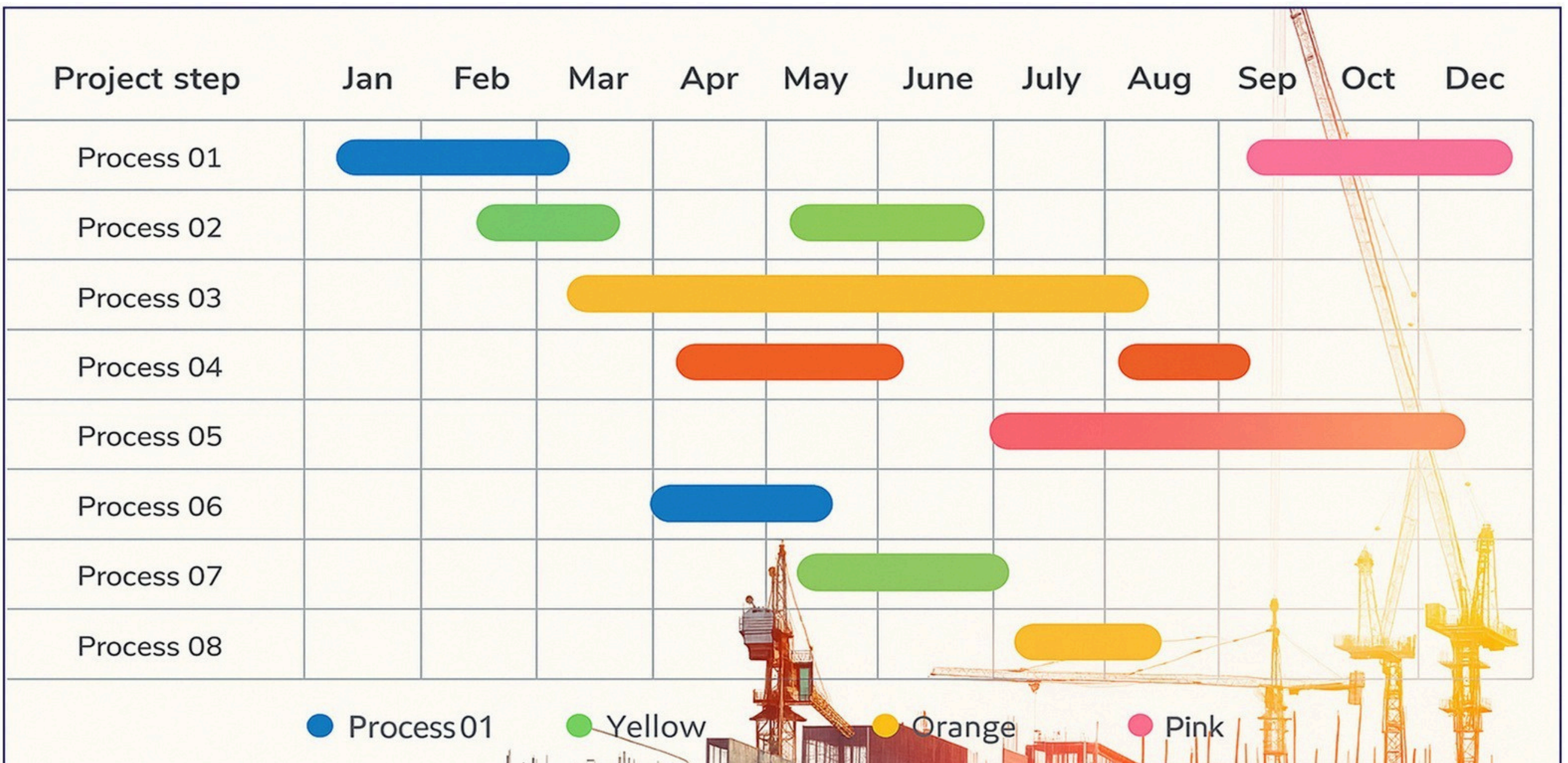
At the Planning Space (TPS), we specialize in delivering comprehensive planning and control solutions that support the successful execution of projects across diverse industries. The Planning Space has established itself as a trusted consultancy, providing scheduling and integrated project management services for Engineering, Procurement and Construction (EPC) projects.

In addition to core planning solutions, TPS also offers specialized services such as:

- Project Progress Report
- Cost Summary Report
- Look-Ahead Schedules
- S Curve and Trend Analysis

Our expertise extends across a diverse portfolio, with significant experience in Oil & Gas, Power, WTP, Semiconductor sector.

Backed by highly skilled team, TPS combined deep expertise, proven methodologies to enhance project cost, effectiveness and timely delivery.



“SMART PLANNING STARTS HERE”

⚙️ OUR SERVICES ⚙️

The planning space provide complete project planning, monitoring and control solutions for efficient and cost effective execution.

Project Scheduling

- ☑ Prepare project schedule by using primavera P6.
- ☑ Define scope.
- ☑ Create WBS based on project scope.
- ☑ Identify activity based on inputs or exp.
- ☑ Estimate duration.
- ☑ Linking and establish relationships.
- ☑ Set / assign baseline and start monitoring.

Define Scope

Establish clear project boundaries and objectives.



Create WBS

Break down the project into manageable tasks.



Identify Activities

List all necessary task from the WBS.



Estimate Duration

Determine the time needed for each activity.



Set Dependencies

Establish relationship between tasks.



Assign Resources

Allocate necessary resource to each task.



Develop Schedule

Create a detailed schedule using software.



Set Baseline

Finalize and approve the schedule.



Monitor Progress

Task and control progress against the baseline.





Monitoring and Controlling

- ☑ Ongoing project performance tracking.
- ☑ Track key milestone and critical activities.
- ☑ Evaluate performance and update project plan.
- ☑ Generate Look ahead schedule (30-60-90) days.
- ☑ Identify delays and corrective action planning.



Change Management

- ☑ The planning space will prepare CAN (Change Advice Note) or change order for revised man Hours due to change in scope.
- ☑ The planning space will initiate the CAN from various stakeholders and PM team.

Can details include:

- Project Start date
 - Project end date
 - Project forecast date
 - Reason for CAN
 - Original budget
 - Revised Budget
 - Approved Budget
 - Change MH
 - Approved MH
 - Scope Details
- ☑ Update Schedule with revised scope, submit revised and updated schedule for review and start monitoring.



Project Progress Report

- ☑ The planning space will prepare Bi-weekly / monthly project progress report (as per client requirement)

Report Includes:

 Plan vs Actual and +/- variance

 Discipline wise weightage based on Man Hours.

 Project KPI's.

The Planning space will provide detail progress updates across Engineering, Procurement and construction

➤ Engineering

- Process Engineering
- Piping Engineering
- Civil Engineering
- Mechanical Engineering
- Electrical Engineering
- Instrumentation Engineering

➤ Procurement

- Pre Order
- Post Order

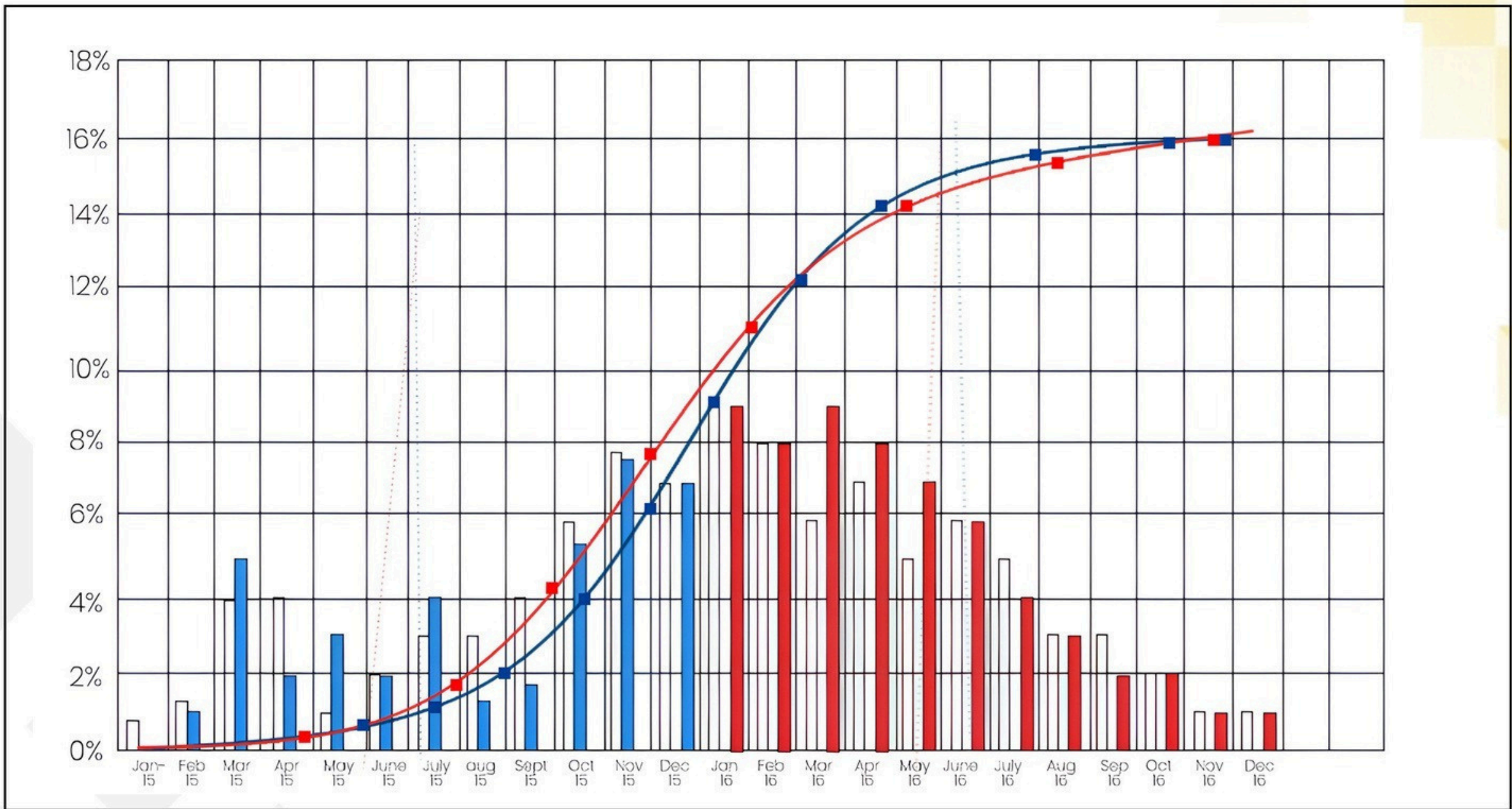
➤ Construction

- Civil
- Mechanical
- Piping

➤ Pre-Commissioning

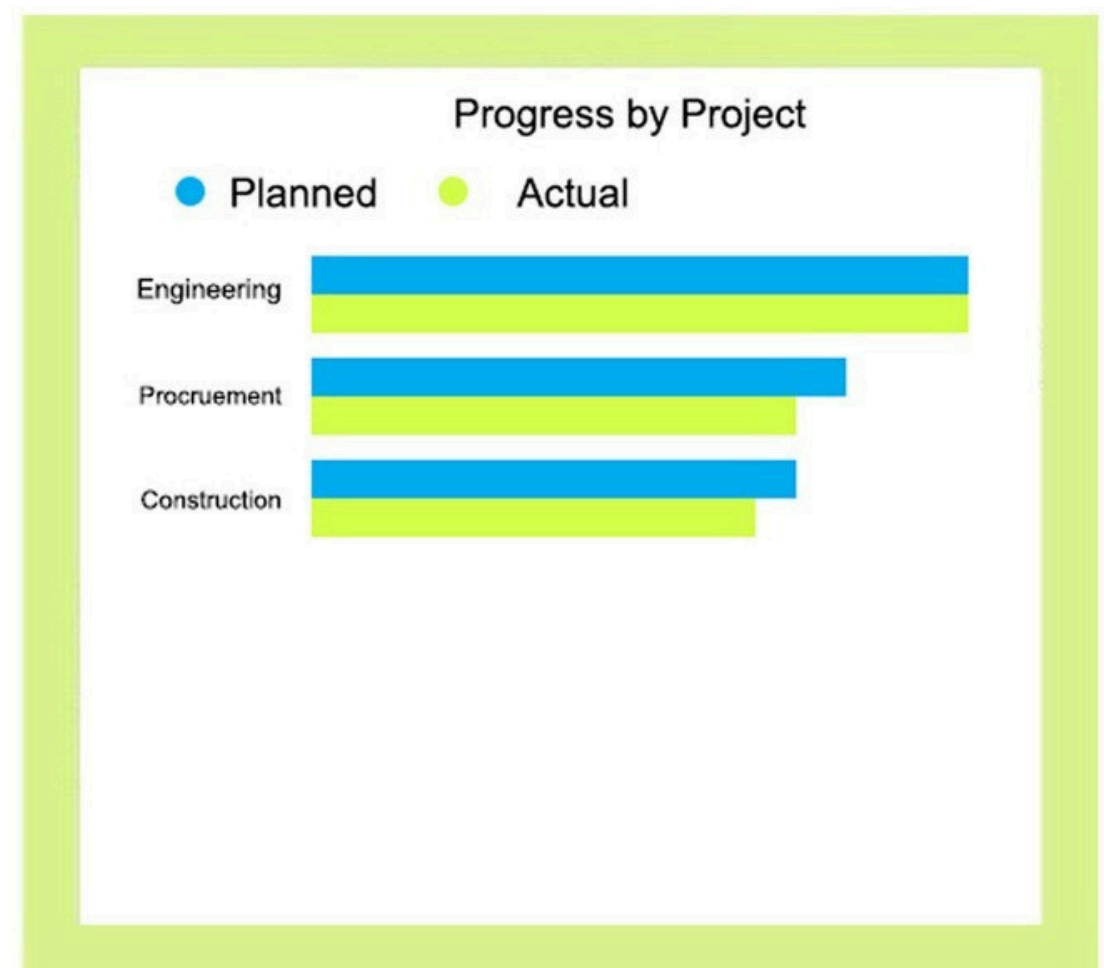
➤ Commissioning

☑ S curve.



- ☑ Area of concern.
- ☑ Cost summary.
- ☑ Deliverable status (Plan / Actual / Remaining).
- ☑ Milestone highlight with date of achievement.
- ☑ Look-ahead for upcoming weeks.
- ☑ TPS will provide following details in the progress report:

30-Apr-2025 Data Date	10-Aug-20 Project Start	10-Nov-27 Project Finish	Project Duration 0 to 1460	Project Duration Elapsed (Yellow) / Remaining (Red)
77.63% Planned %	55.96% Progress	Yes Project Delay		





Cost Control and Budgeting

The planning space provides a comprehensive cost summary report to ensure effective cost monitoring and control. This report is prepared on a monthly basis and includes the following key components:

➤ Key Elements of Reports:

- Original budget
- Approved budget
- Revised budget
- Approved revised budget
- Remaining budget
- Actual hours.

➤ Performance Metrics:

- EAC (Estimate at Completion)
- ETC (Estimate to Complete)
- SPI (Schedule Performance Index)
- CPI (Cost Performance Index).



Planning Package

The Planning space delivers a comprehensive planning package to establish effective project control and ensure timely execution.

➤ Package Component:

- Organisation chart- Project hierarchy and reporting structure
- Project WBS - Detailed work breakdown structure
- Project Measurement System
- Look-ahead Schedule – Short term / Long term execution plan
- Overall Project Schedule (Summarised) – high level project timeline
- Overall Project Schedule (Detailed) – Gantt Chart with activities
- Milestone list
- Project Critical Path

➤ **Progress and Control Tools:**

- Updated Schedule (Cut-off Based) Latest project status updates.
- Progress Curves – Visual Representation of Actual and Planned Progress.
- Reporting Formats.
- Project Control Procedures – Methodology for Schedule and Cost Control.
- Progress Measurement Procedures – Systematic tracking of work completion.



Planning Man-hour Estimate

The Planning space will present a detailed man hour estimate and corresponding rates during the meeting. These will be discussed transparently with client to ensure alignment on project requirements, scope and Budget expectation.



Benefit of our services

- ☑ Real-time insight for better decision-making.
- ☑ Dedicated project monitoring and control team.
- ☑ Regular and easy reporting of project actual v/s progress plan & raised timely flags and warning in case of any deviations from plan.
- ☑ Timely addressing all engineering design related activities.
- ☑ Enhanced transparency and accountability.

WHY CHOOSE US ?

- ☑ Experience In Wide Range of Industries.
- ☑ Expertise In Project Mangement and Controls Right From Enginerring Design to Project Handover.
- ☑ Expertise In Working on Internationally used Project Scheduling Software like Primavera.
- ☑ Experienced Project Planning Professionals.
- ☑ Industry Best Practices and Advanced Software Tools.
- ☑ Commitment to Quality, Precision and Timely Delivery.
- ☑ Client-Focused Scalable Approach.





THE PLANNING SPACE

PROJECT MANAGEMENT CONSULTANT

Get In Touch With us



+91-9096417079



info@theplanningspace.in

payal@theplanningspace.in



www.theplanningspace.in



Ivory Garden Ajwa Road Vadodara
Gujarat 390019

